



A Safe Place to Shoot

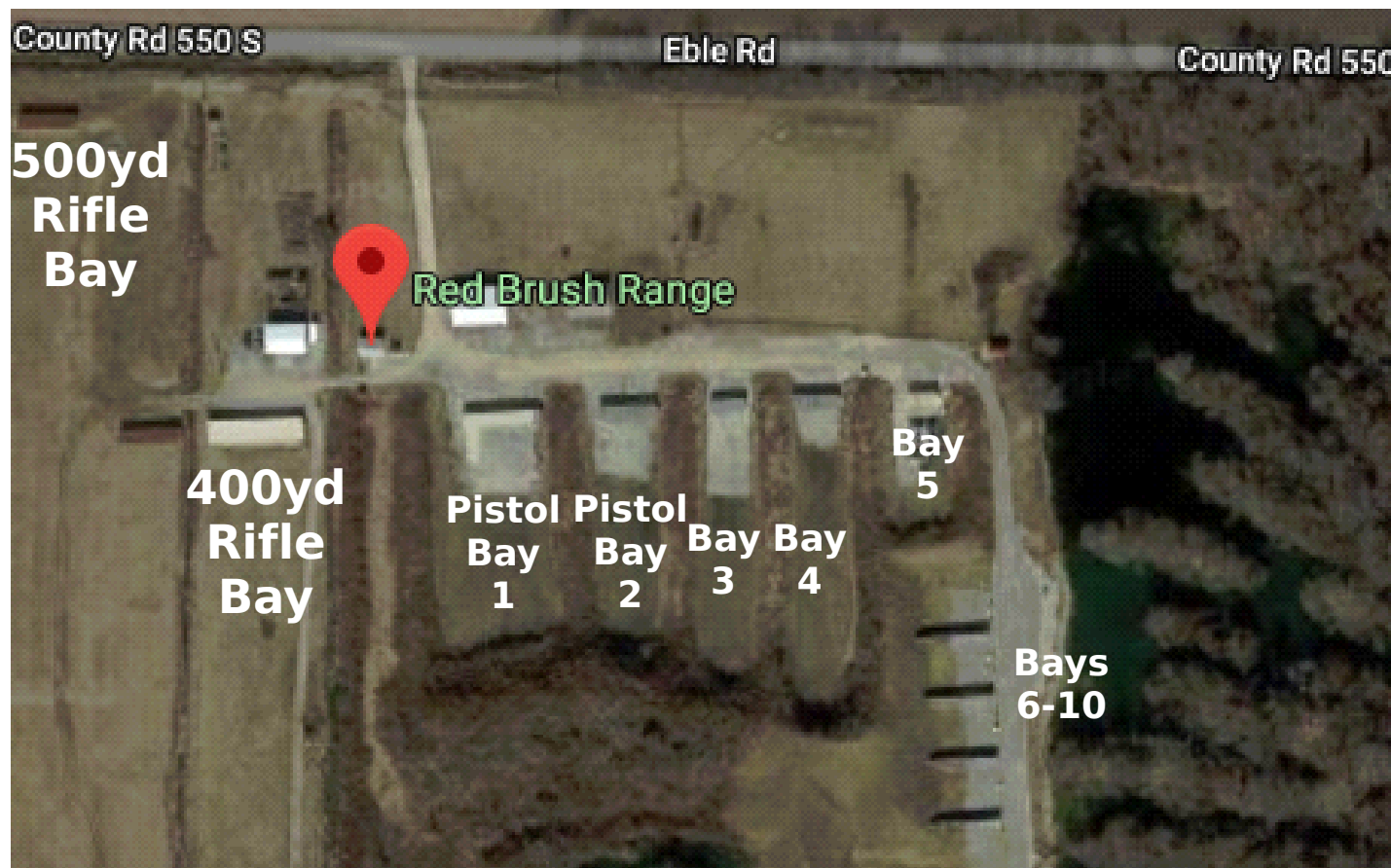
Brief Introduction to Range Safety and Etiquette

Objectives of Presentation

- Introduce basic concepts of range safety and etiquette
- Clarify material in the range rules and regulations (mandatory reading for all members)
- Provide opportunity for your questions to be answered
- Help Red Brush Rifle Range continue to be “A Safe Place to Shoot”

Multiple Shooting Areas

- The range is segmented into bays
- Each bay can safely operate independent of the others



Bay Layout

- All bays are set up in a similar manner
- **Back berm** keeps rounds in range
- **Side Berms** capture ricochets to the side
- **Target Area** is where targets are placed (not on berms!)
- **Firing Line** is where shooting takes place



Bays Must Be Shared!

- It is the responsibility of members to share the bays with each other
- To facilitate this there are guidelines all members and guests must follow:
 - Proper operation of their firearms
 - Three rules of gun safety
 - Line commands
 - Safety equipment
 - Types of targets and ammunition
 - Common courtesies

Understand How Your Firearm Operates



- Firearms vary by type and manufacturer
- Read your owners manual!

Three Rules of Gun Safety

1. Always keep your muzzle pointed in a safe direction
2. Always keep your finger off the trigger until you are ready to shoot
3. Always keep the firearm unloaded until you are ready to shoot

Three Rules of Gun Safety

1. Always keep your muzzle pointed in a safe direction
 - Even if a firearm is unloaded, never let the muzzle point towards someone
 - When transporting firearms to the line keep the muzzle pointed straight up (towards sky) or down (towards ground)
 - When on the firing line, keep the muzzle pointed toward the back berm (side berms are not a safe direction)

Three Rules of Gun Safety

2. Always keep your finger off the trigger until you are ready to shoot
 - Best practice is to put finger on trigger only when sights are on your target
 - Be especially careful when holstering pistols, the majority of self shootings occur when attempting to holster with finger on the trigger

Three Rules of Gun Safety

3. Always keep the firearm unloaded until you are ready to shoot
 - Firearms should be unloaded when transporting to/from firing line and any time the bay is not “hot”
 - Personal carry arms can be transported loaded if
 - they are secured on the body
 - in a holster which covers trigger
 - mechanical safeties are engaged

What Does “Unloaded” Mean?

- A firearm is treated as unloaded only when it can be visually verified as such
- As an example, best practice for a typical semi-auto is:
 - Magazine out
 - Bolt/action back
 - Safety on
 - Chamber empty
 - “Grounded”- laying flat, no-one touching

Line Commands

- Standardized language to communicate with other shooters on a bay
- Determines status of bay – that is, when it is safe to shoot and when it is safe to go down range to change targets
- Visual and verbal confirmation from every shooter on a line is necessary to change status of bay
 - Best practice - make eye contact!

Line Commands

- “RANGE IS HOT” - shooting can commence with confirmation of all other shooters
- “CLEAR” - requests that shooting stops so shooters can safely go down range
- “NO, NOT CLEAR, WAIT” - response to “CLEAR” command to indicate it is not yet safe
- “CEASE FIRING” - calls for all shooters to immediately stop firing as there is a potential safety issue...it is a **RED LIGHT**
- “COLD” - range status that means all shooting has stopped and no one is expecting to fire a round but it is not safe to go down range



Demonstration of Line Commands in Action

Safety Equipment - Personal

- Always wear safety glasses when at a bay even if you are not shooting
 - minimum ANSI Z87.1/3
- Always wear hearing protection when shooting or near others shooting



Many Good Options Available



Safety Equipment - Club

- The club maintains items in the members room
 - Drinking water – avoid dehydration!
(do not drink water in restrooms)
 - Fire extinguisher
 - First aid supplies/AED
 - Heat / Air Conditioner



- If you use fire extinguisher or first aid supplies please notify a board member so that they can be replenished

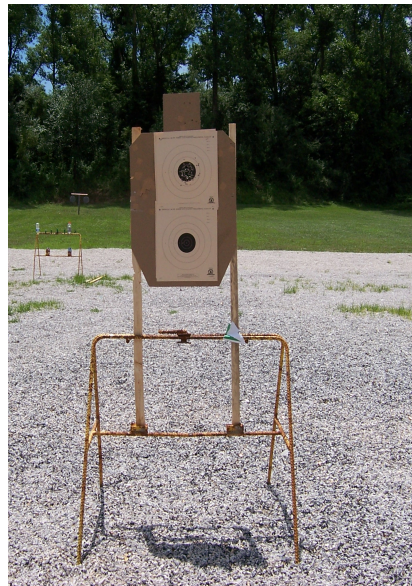
Types of Targets & Setup

- Not all targets are acceptable
 - No glass, concrete, electronics, junk
- Do not use barrels
- Use provided target stands correctly

Wrong



Correct

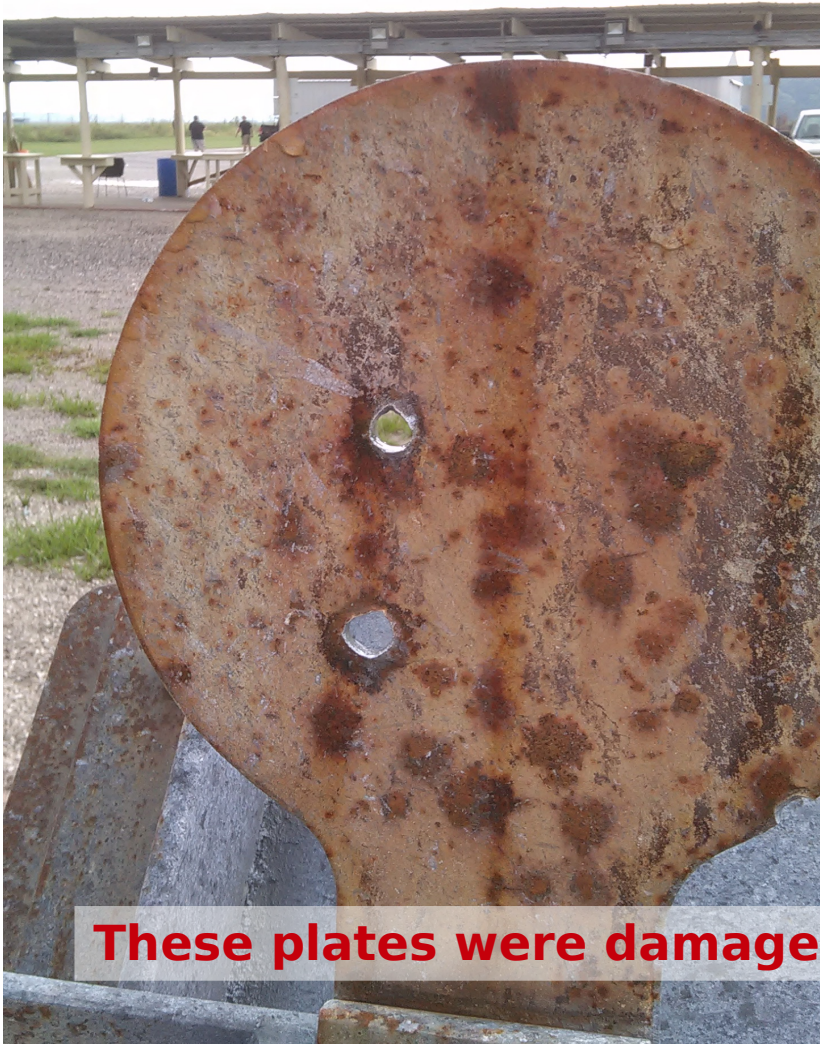


Correct



Types of Targets & Setup cont.

- Shoot steel targets from proper distance
 - 100+ yards rifle & from line for falling plates

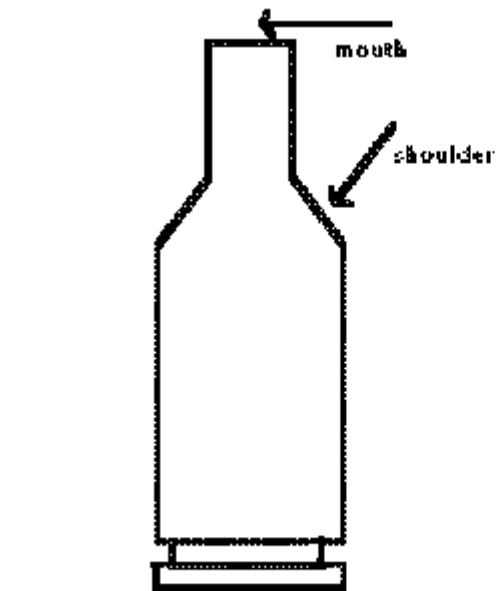


These plates were damaged by members not using targets properly!

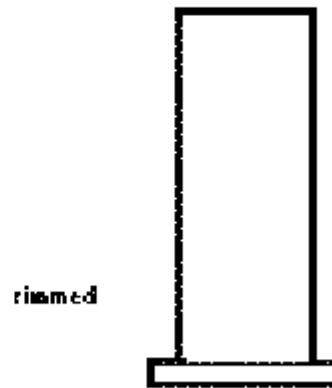
Types of Ammunition

- Be aware of ammunition restrictions
 - Certain very powerful cartridges (50 BMG and similar) are restricted on entire range
 - Pistol caliber cartridges only on pistol bays
 - No bottle necked cartridges on marked bays
 - Avoid armor piercing rounds on steel targets
 - Be aware of fire hazards from tracers and incendiary rounds
- Before shooting **read the signs** at the bay for additional restrictions

Types of Ammunition



bottleneck cartridge



straight wall



**50 BMG NOT
ALLOWED**

Common Courtesies

- Point out unsafe practices immediately
- Be polite and respectful (not defensive)
- Restrict equipment in shooting area to what is immediately being used
 - especially extra, unchecked firearms
- If you have very loud, heavy muzzle blast, or brass flinging firearms increase space from other shooters
- Clean up brass and bring in target stands
- Monitor your guests, especially youths

- On **www.redbrush.org**

-



Home	Matches	Members Info	Photos	About	Contact	Youth Day	Firearms Training	Gun Shows	Links
------	---------	--------------	--------	-------	---------	-----------	-------------------	-----------	-------

Online Newsletter and Email Alerts

Membership Application

Amendments Patriots

Calendar of Events

Club Privileges and Obligations

Ranges Rules and Regulations

sdays night bowling pin event. Anyone who
call Charlie Hallam (812) 424-2358. Thank

Club Bylaws

Safety Orientation and Quiz

The club is always looking for people who could help or know someone who could help you!

Search

Try the reduced mobile site.

<http://m.redbrush.org>

[Click Here](#)



Order your Red Brush T-shirt here!

Red Brush Rifle Range is a full-featured rifle range in Southern Indiana, just east of Evansville.

The range consists of a 500 yard rifle bay, a 375 yard rifle bay, a 100 yard rifle/pistol bay, and 4 additional pistol bays (with ranges of 50-100 yards). [View range photos here.](#)

RSS - Red Brush Classifieds

Next Steps cont.

- Consider training to improve your safety and shooting skills
- If you ever have a question regarding safety, contact our range safety officer



A Safe Place to Shoot

Enjoy the Range
and
Be Safe!